



Majuli Stakeholder Mapping Report

**Sustainable Action for Climate Resilient Development
in Majuli (SACReD)**

Estimation of Potential Value of Ecosystem Services and Development of REDD+ Project for Assam (TA-9)

**Sustainable Action for Climate Resilient Development
in Majuli (SACReD)**

Stakeholder Map

**Assam Project on Forest and Biodiversity Conservation
&
IORA Ecological Solutions**

Table of Contents

LIST OF FIGURES.....	3
LIST OF TABLES	3
ABBREVIATIONS.....	4
1. INTRODUCTION	5
2. CLASSIFICATION OF STAKEHOLDERS	5
3. LIST OF STAKEHOLDERS	6

List of Figures

Figure 1: stakeholder map–majuli district	6
---	---

List of Tables

Table 1: Veto Stakeholders in Majuli district.....	6
Table 2: Key stakeholders in Majuli district.....	7
Table 3: Primary stakeholders in Majuli district.....	8
Table 4: Secondary stakeholders in Majuli district	9

Abbreviations

APFBCS	Assam Project on Forest and Biodiversity Conservation Society
ARIASS	Assam Rural Infrastructure & Agricultural Services Society
AYUSH	Ministry of Ayurveda, Yoga and Naturopathy, Unani, Sidhha and Homoeopath
ATI	Assam Textile Institute
BMC	Biodiversity Management Committee
CAMPA	Compensatory Afforestation Management and Planning Authority
CBOs	Community Based Organizations
CSIR	Council of Scientific and Industrial Research
DoEF	Department of Environment and Forests, Government of Assam
ICAR	Indian Council for Agricultural Research
ICFRE	The Indian Council of Forestry Research and Education (ICFRE)
IICPT	Indian Institute of Crop Processing Technology
IIE	Indian Institute of Entrepreneurship
IIT	Indian Institute of Technology
IOC	Indian Oil Corporation
MDoNER	Ministry of Development of North Eastern Region
MoEFCC	Ministry of Environment Forests and Climate Change
MoRD	Ministry of Rural Development
NEIST	North East Institute of Science and Technology
NGO	Non-Governmental Organization
NIRD	National Institute of Rural Development
ONGC	Oil and Natural Gas Corporation
REDD+	Reducing Emissions from Deforestation and Forest Degradation
RFRI	Rain Forest Research Institute
SMPB	State Medicinal Plants Board
WII	Wildlife Institute of India
WTI	Wildlife Trust of India
WWF	World Wildlife Fund

1. Introduction

Projects in the Agriculture, Forestry and Other Land Uses (AFOLU) sector pose unique challenges by virtue of the diversity of stakeholders owing to the nature of resources and services. The Sustainable Action for Climate Resilient Development in Majuli (SACReD) is a project initiated under the APFBC's Estimation of potential value of ecosystem services and development of REDD+ project for Assam (TA -9)

The nodal Department for the advancement and implementation of SACReD in Majuli is Department of Environment and Forests (DoEF), Government of Assam, with technical assistance from IORA Ecological Solutions.

It is imperative that the pilot SACReD the “Low Emission Development Strategy” project being developed in Majuli district in Assam take cognizance of this, and map out all plausible stakeholders who may directly or indirectly affect the project or be affected by the project. Towards this end, all potential stakeholders in the landscape have been mapped¹. The mapping has been conducted in multiple phases, and will be validated after consultations with various thought-leaders in the sector as well as with the DoEF and other stakeholders in the districts of Majuli. This report maps stakeholders in Majuli district.

2. Classification of Stakeholders

Mapping of stakeholders for Majuli followed a multiple criteria analysis, leading to a clear understanding of their influence on implementing the project in the district. All stakeholders have been categorized as: **veto**, **key**, **primary** and **secondary** stakeholders based on their extent of influence, assessed using secondary literature study and expert consultations². The classification provides an easy to understand relationship of each entity with the project. The categorization is described as under:

Veto stakeholders — Principal stakeholders with decision making powers who have a direct impact on the project, with authority to direct the momentum of the project.

Key stakeholders — Stakeholders that directly affect demand-supply scenarios of resources or have a strong influence on project activities. They contribute significantly through their direct participation in the project, and are expected to be involved with the project throughout. Their support is crucial in achieving the objectives of the project.

Primary stakeholders — Stakeholders that may be affected by project outcomes or are directly influenced by the activities planned under the project in Majuli.

Secondary stakeholders — Stakeholders who are temporarily involved or have an indirect interest in the actual mitigation activities. Their actions may have an impact on the project. They are involved in research activities, capacity building and trainings and other forestry extension activities. They are usually organizations with technical know-how, but are not directly affected by the mitigation activities. The dissemination of knowledge regarding the aspects of SACReD is a very important operation performed by the secondary stakeholders.

The set of tables below lists the above mentioned categories of stakeholders and elaborates on their proposed roles and responsibilities in the project.

¹ The methodology that has been used for stakeholder mapping has been heavily adapted from the GIZ Capacity Works Tool.

² The list may stand revised after DoEF's input.

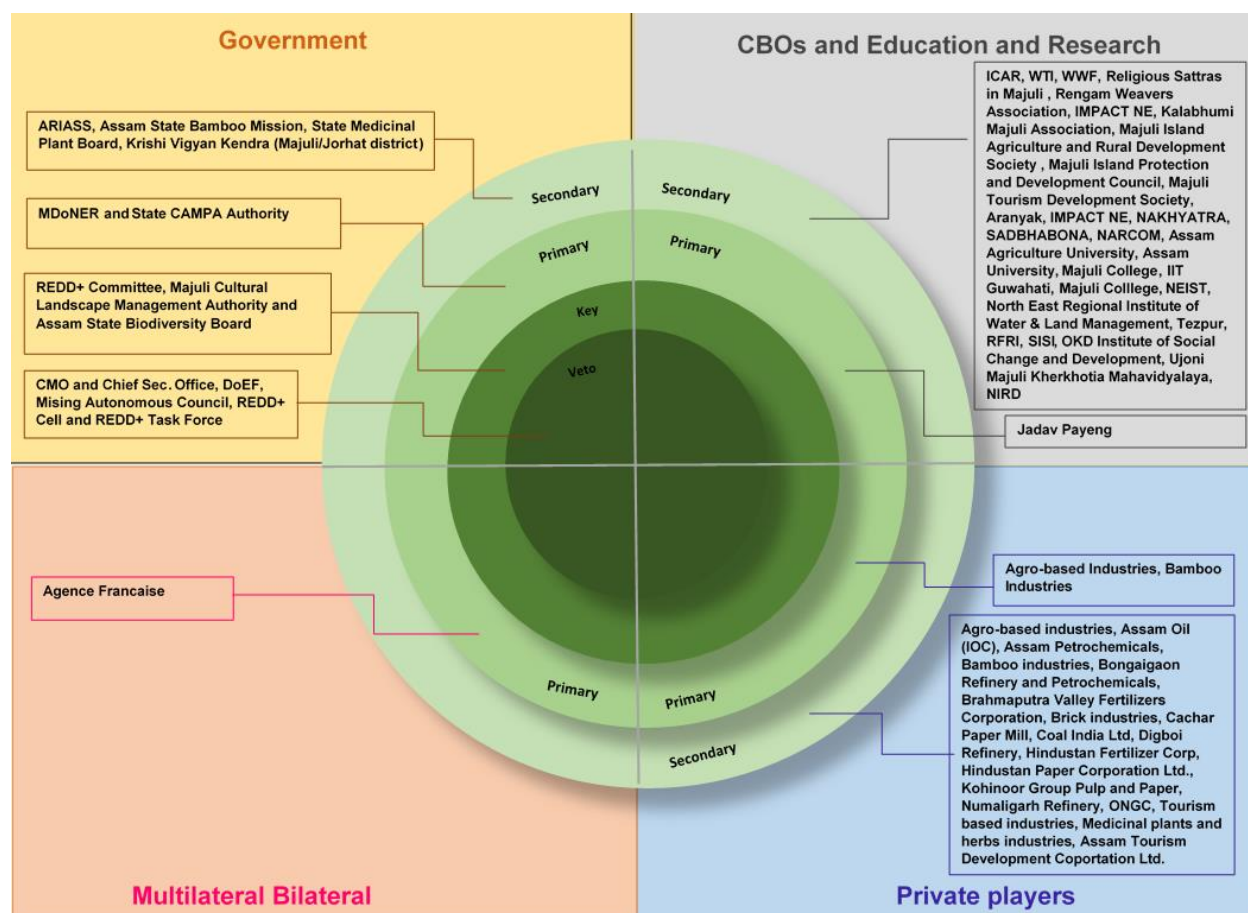


FIGURE 1: STAKEHOLDER MAP—MAJULI DISTRICT

3. List of Stakeholders

TABLE 1: VETO STAKEHOLDERS IN MAJULI DISTRICT

Name	Affiliation	Agenda	About the Organization	Roles and Responsibilities
Chief Minister's Office and Chief Secretary's Office	Government of Assam	Administration	Administration guided by the CM and Chief Secretary of Assam	Administrative backing of the Government necessary for implementation.
Department of Environment and Forests (DoEF)	Government of Assam	Administration	State government department for forest and environment issues	Nodal agency for the project at the state level
Mising Autonomous Council (MAC)	Independent authority established under Mising Autonomous Council Act, 1995, by Government of Assam	Administration	Autonomous Council responsible for governance in Majuli district	Support for all activities in Majuli

REDD+ Cell	Government of Assam	Administration	REDD+ Cell setup to look after the activities of the project, in line with National REDD+ Policy, REDD+ Task Force will monitor the project in Majuli	<ul style="list-style-type: none"> - Strategic role in management and implementation of the project to make it consistent with international mechanism. - Coordination with REDD+ Cell at national level when required and provision of relevant information and data regarding the project
REDD+ Task Force	Government of Assam	Administration	REDD+ Task Force will be responsible for technical and policy aspects required to develop and implement the project	<ul style="list-style-type: none"> - Provision of specific technical and policy guidance in project implementation. - Establishment of REL, MRV, Standard Operational Procedures (SOP), capacity building, benefit sharing, etc.

TABLE 2: KEY STAKEHOLDERS IN MAJULI DISTRICT

Name	Affiliation	Agenda	About the Organization	Roles and Responsibilities
REDD+ committee	Government of Assam	Administration	An inter-departmental committee at the district level to manage the SACReD project in Majuli	<ul style="list-style-type: none"> - Support, guidance and supervision of the project - Provide support in REDD+ project development and implementation - Convergence of interdepartmental schemes to achieve objectives of REDD+,
Assam State Biodiversity Board	Government of Assam	Administration	Board constituted as per Biodiversity Act 2002	<ul style="list-style-type: none"> - Guiding the project team on matters related to biodiversity conservation, sustainable use and benefit sharing in the project area. - Provision of information on endangered species and HCVs present in the project area.

Name	Affiliation	Agenda	About the Organization	Roles and Responsibilities
Majuli Cultural Landscape Management Authority	Cultural Affairs Department	Administration	Management authority for Majuli to preserve its cultural heritage	Consultation in program interventions and support

TABLE 3: PRIMARY STAKEHOLDERS IN MAJULI DISTRICT

Name	Affiliation	Agenda	About the Organization	Roles and Responsibilities
Ministry of Development of North Eastern Region (MDoNER)	Central Government	Administration	Ministry looking at matters related to the development and wellbeing of the North-East	<ul style="list-style-type: none"> - Consultations on development and livelihood activities proposed as part of the project, possibility of convergence and overall policy aspects of the project. - Guidance on private investment, capacity building and technical assistance for the project.
Assam State Compensatory Afforestation Management and Planning Authority (CAMPA) Authority	Government of Assam	Administration	Authority looking at compensatory afforestation activities in the state	<ul style="list-style-type: none"> - Identification of land and promotion of plantation activities as compensatory afforestation under CAMPA funds. - Capacity building of DoEF officials for better protection and conservation of forests. - Strategic role in aligning the scheme with the objectives of the project.
Agence Francaise de Developpement (AFD)	Bilateral	Technical and Financial	Bilateral agency steering technical and financial cooperation between India and France.	Main funding agency of the programme
Agro-based Industries	Public/private	Industry	Directly/indirectly affected by forest produce and management or impact forest resources	Exploring clean tech solutions to reduce emissions from activities.
Bamboo Industries	Public/private	Industry	Dependent on forest products, and may be meeting their needs from captive plantations, agro-	Earmarking bamboo plantations as part of regeneration activities and convergence for providing livelihood for

Name	Affiliation	Agenda	About the Organization	Roles and Responsibilities
			forestry or industrial plantations in Assam	communities which will eventually reduce pressure on forest
Jadav Payeng	NA	Community	'Forest Man' of Majuli	Coordination for plantation activities and communication and outreach as part of project activities

TABLE 4: SECONDARY STAKEHOLDERS IN MAJULI DISTRICT

Name	Affiliation	Agenda	About the Organization	Roles and Responsibilities
Krishi Vigyan Kendra (Majuli/Jorhat district)	Indian Council of Agricultural Research (ICAR)	Capacity building, assessment	Demonstration, assessment, knowledge and resource center	Collaborate for analysis of soil samples for ecological assessment and technical support (if required)
Assam Agriculture University	Education Department	Research and education	State university focused on education and research	Provide relevant data and information about sustainable agriculture practices to increase the productivity and as well as climate resilient mechanisms which can be synced with livelihood to deter people from encroachment of forests in Majuli
Assam University	Education Department	Research and education	State university focused on education and research	Provision of relevant data and information about Majuli
Department of Applied Geology, Dibrugarh University	Education Department	Research and education	Research on geomorphology, geology, hydrology of landscapes in Assam	Provision of information on geomorphology, geology and hydrology of Majuli
Indian Council of Agricultural Research (ICAR)	Ministry of Agriculture	Research and education	Central university focused on research and education	Relevant consultation on agricultural practices in Majuli. ICAR can help in providing guidance on intensified agriculture and increasing productivity through climate resilient agriculture which can be synced with livelihood to deter people from forest encroachment in Majuli

Name	Affiliation	Agenda	About the Organization	Roles and Responsibilities
State Medicinal Plants Board (SMPB), Assam	Government of Assam	Administration	Board created to oversee the development of medicinal plants in Assam, with State Government departments as Members	<ul style="list-style-type: none"> - Support cultivation of medicinal plants as part of REDD+ interventions by following good agriculture and collection practices. - Development of processing zones, warehousing, value addition and infrastructure development. - Development and monitoring of medicinal plant gardens. <p>These activities will enhance livelihood and decrease dependency on forests of Nagaon.</p>
IIT Guwahati	HRD Ministry	Research and education	Central university focused on research and education	<p>Collaborate for:</p> <ul style="list-style-type: none"> - Technological development of tools and techniques of forest monitoring and reporting - Designing intervention activities
North East Institute of Science and Technology (NEIST)	Council of Scientific and Industrial Research (CSIR)	Research and education	Central university focused on research and education	<p>Collaboration for:</p> <ul style="list-style-type: none"> - Technological development of forest monitoring and reporting tools and techniques - Designing intervention activities
Majuli College	Education Department	Research and education	District level junior college in Majuli	Collaborate for communication and outreach activities
North East Regional Institute of Water & Land Management, Tezpur	Ministry of Water Resources	Research and education	Central university focused on research and education	Collaborate for technical interventions, knowledge center
OKD Institute of Social Change and Development	Education Department	Research and education	State university focused on education and research	Social Science aspects of the SACReD project in Majuli
Rain Forest Research Institute (RFRI)	ICFRE	Research and education	Focused on forestry research and education	Collaborate for technical interventions, knowledge center
Tezpur University	Ministry of Human	Research and education	Central university focused on research and education	Provision of data and consultation on various aspects of project design

Name	Affiliation	Agenda	About the Organization	Roles and Responsibilities
	Resource Development			
Ujoni Majuli Kherkhotia Mahavidyalaya	Education Department	Research and education	Local junior college and university in Majuli	Collaborate for technical interventions, knowledge center
National Institute of Rural Development (NIRD), Regional Branch Guwahati	Ministry of Rural Development	Administration	Training and research in the rural development sector	Consultation on social surveying, drivers of change etc.
Small Industries Service Institute (SISI)	Ministry of Micro, Small and Medium Enterprises	Research/ Education/ Implementation	Development of small scale industries in Assam	Cooperation for enterprise development activities
Wildlife Trust of India (WTI)	NGO	Community and conservation	NGO working towards conserving wildlife and its habitats across several landscapes in India	Collaborate for awareness, sensitization and environmental education
World Wildlife Fund (WWF)	NGO	Community and conservation	International NGO working towards wildlife conservation and endangered species	Collaborate for awareness, sensitization and environmental education
Sattras in Majuli	CBOs	Community	Community bodies which look after religious matters in Majuli	Outreach, communication of project objectives and intervention activities
Rengam Weavers Association	CBOs	Community	Community weavers association looking after welfare of weaver community	Designing and implementation of alternate livelihood opportunities among weaver community in Majuli
Assam Textile Institute (ATI)	Industries Department, Government of Assam	Research and education	Institute offering courses on Textile Technology, Garment Technology and Fashion Technology	As part of REDD+ interventions convergence on provision of alternate livelihood opportunities to reduced dependency on forests

Name	Affiliation	Agenda	About the Organization	Roles and Responsibilities
Aranyak	CBOs	Policy, research, implementation, outreach, communication	Works towards forest management and conservation, market value chain creations and livelihood generation.	communication of objectives and manpower mobilization
IMPACT NE	CBOs	Community	Organization with a long-term vision of sustaining socio-economic development of the poor	Awareness programs on environment and conservation
Kalabhumi Majuli Association	CBOs	Community	Works in the area of ecotourism, natural resource management and environment	Awareness programs on environment and conservation. Promotion of ecotourism initiatives.
Majuli Island Agriculture and Rural Development Society	CBOs	Community	Focused on agriculture and rural development of island population	Convergence in district-level rural development schemes
Majuli Island Protection and Development Council	CBOs	Community	NGO focused on conservation and development of Majuli - to build up mass awareness about Majuli and its shrinking shoreline due to rapid erosion. Also trying to preserve the cultural and spiritual heritage	Awareness programs on environment and conservation. Assistance in social surveying and training programs
Majuli Tourism Development Society	CBOs	Community	Focus on ecotourism development in the area	Convergence in promoting ecotourism initiatives
NAKHYATRA	CBOs	Community	Focus on sustainable development in Majuli	Awareness programs on environment and conservation
SADBHABONA	CBOs	Community	Focus on sustainable development in Majuli	Awareness programs on environment and conservation
NARCOM	CBOs	Community	Organization focused on community livelihoods and agroforestry in hill areas in Assam	Delivery of alternate livelihood activities
Assam Oil (IOC)	PSU	Industry	Directly/indirectly affected by forest produce and	Exploring low-Carbon clean technology solutions to reduce

Name	Affiliation	Agenda	About the Organization	Roles and Responsibilities
			management or impact forest resources	emissions from industrial activities
Oil India Ltd.	Ministry of Petroleum and Natural Gas	Industry	Involved in exploration, development and production of crude oil and natural gas, transportation of crude oil and production of liquid petroleum gas.	- Exploring low-Carbon clean technology solutions to reduce emissions from industrial activities. Convergence activities for raising plantations, initiatives for wildlife conservation through awareness programmes, etc. as part of their CSR and brand value creation.
Assam Petrochemicals	PSU	Industry	Directly/indirectly affected by forest produce and management or impact forest resources	Exploring low-Carbon clean technology solutions to reduce emissions from industrial activities
Bongaigaon Refinery and Petrochemicals	PSU	Industry	Directly/indirectly affected by forest produce and management or impact forest resources	Exploring low-Carbon clean technology solutions to reduce emissions from industrial activities
Brahmaputra Valley Fertilizers Corporation	PSU	Industry	Directly/indirectly affected by forest produce and management or impact forest resources	Exploring low-Carbon clean technology solutions to reduce emissions from industrial activities
Cachar Paper Mill	PSU	Industry	Dependent on forest products, and may be meeting their needs from captive plantations, agro-forestry or industrial plantations in Assam	Convergence activities for raising plantations
Coal India Ltd	PSU	Industry	Directly/indirectly affected by forest produce and management or impact forest resources	Exploring low-Carbon clean technology solutions to reduce emissions from industrial activities
Digboi Refinery	PSU	Industry	Directly/indirectly affected by forest produce and management or impact forest resources	Exploring low-Carbon clean technology solutions to reduce emissions from industrial activities
Hindustan Fertilizer Corporation	PSU	Industry	Directly/indirectly affected by forest produce and management or impact forest resources	Exploring low-Carbon clean technology solutions to reduce emissions from industrial activities

Name	Affiliation	Agenda	About the Organization	Roles and Responsibilities
Hindustan Paper Corporation	PSU	Industry	Dependent on forest products, and may be meeting their needs from captive plantations, agro-forestry or industrial plantations in Assam	Convergence activities for raising plantations
Kohinoor Group Pulp and Paper	PSU	Industry	Dependent on forest products, and may be meeting their needs from captive plantations, agro-forestry or industrial plantations in Assam	Convergence activities for raising plantations
Numaligarh Refinery	PSU	Industry	Directly/indirectly affected by forest produce and management or impact forest resources	Exploring low-Carbon clean technology solutions to reduce emissions from industrial activities
Oil and Natural Gas Corporation (ONGC)	PSU	Industry	Directly/indirectly affected by forest produce and management or impact forest resources	Exploring low-Carbon clean technology solutions to reduce emissions from industrial activities
Tourism Industries	Public/private	Industry	Operators focusing on ecotourism activities in Majuli	Income generation through ecotourism as alternative livelihoods
Industrial Papers (Assam) Ltd.	PSU	Industry	Dependent on forest products, and may be meeting their needs from captive plantations, agro-forestry or industrial plantations in Assam	Convergence activities for raising plantations
Medicinal Plants and Herbs industries	Public/private	Industry	Industries focused on manufacture of products from medicinal plants and herbs	Development and promotion of medicinal gardens



Environmental Finance • Climate Policy • Clean Technology • Ecosystem Conservation

IORA Ecological Solutions Pvt. Ltd.
225 B, Indraprastha Gyanmandir Complex,
Lado Sarai Village, New Delhi – 110030

Tel: +91-11-41077549

Fax: +91-11-41023126

Email: info@ioraecological.com